

“ANNIVERSARY COIF” by Dorothy Biggers-Sneed, Tucson, Arizona

THIS WAS A PROBLEM HEAD . . .

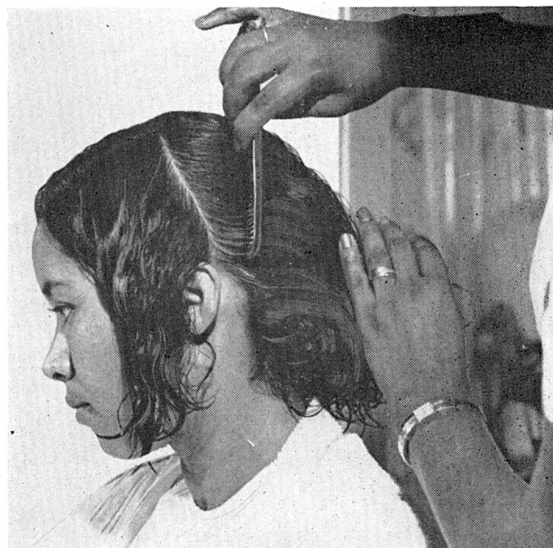
At 24, Model Susan Green had given up hope of ever being able to do anything with her hair. Her multi-career of being a Dance Instructor, Student at the University of Arizona, Receptionist in a doctor's office — all demanded top good looks. Susan is part Filipino as well as a Negro but her hair was coarse, wiry and wouldn't hold water — just impossible.

Stylist Dorothy Biggers-Sneed specializes in hair of different textures, tried first giving Susan regular permanents to make it more manageable. Finally, she came up with the right Curl Relaxer and Susan has been getting them now for two years.

"Now, I'm so proud of Susan's hair," says Mrs. Sneed. "She had worn it in a braid — just any way to get it out of her way — when I first saw her. Now we can give her the latest styles and she's as proud of her appearance as a professional model."

Tucson, Arizona advertises its dry climate. It's wonderful for general health but hard on hair. Scalp treatments are the order of the day to keep lustrous hair and Dorothy Sneed pushes them.

"With our hard water and dryness, I stress scalp treatments to every Customer. Gradually they see the need of them and insist on treatments themselves."



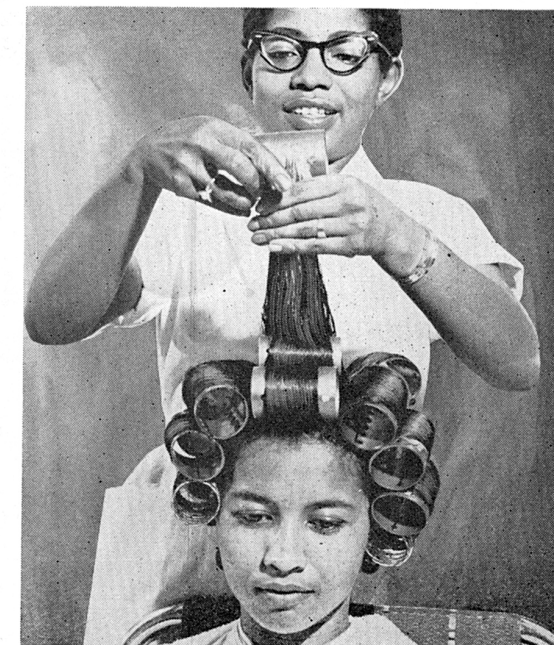
1. Following the shampoo, I apply a wave-set lotion and begin sectioning the hair for my setting. The length of this hair is six inches.



2. I begin my setting at the left side. I'm using magnetic rollers in the jumbo size and though it is not usually necessary to use end papers with magnetic rollers, I find it's best here to control Susan's unruly ends.



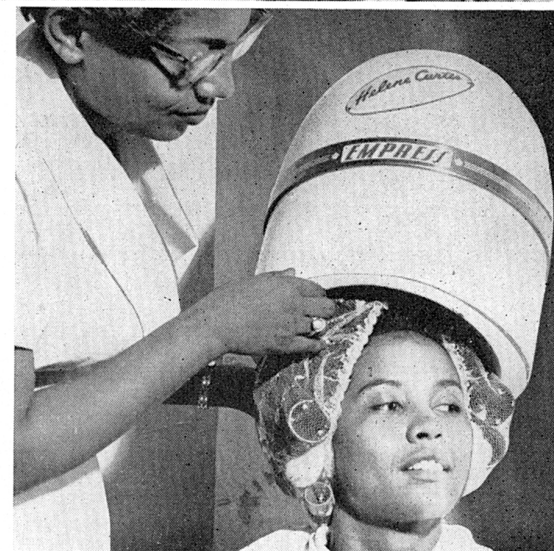
3. The first curl made, we pin it with the new twin pin by Salon Set. The twin pin is so made that it's the same on either side and no matter how you pick it up, it can be inserted quickly. All hair is being rolled under.



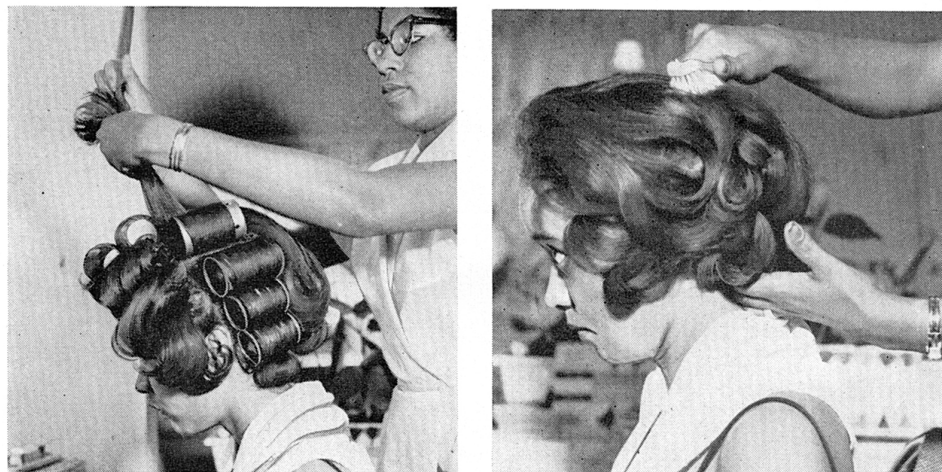
4. In my setting, I worked first on the sides, then the back and saved the gap in the middle for the last. I roll tightly — not so much as to get a curl, but so that the curl is set on its base correctly. If the root of the curl is smooth, it will lay as you want in the comb-out.



5. Note that I used the jumbo rollers throughout except at the nape of the neck. Here I wanted the hair to hug the neck a little, and so I used a slightly smaller size roller.



6. Susan has to use gymnastics to go under the dryer. Since her head is large, plus using these jumbo rollers — it's difficult for her to fit under the dryer. We almost dry it in sections, look forward to my buying a new air-conditioned dryer soon.



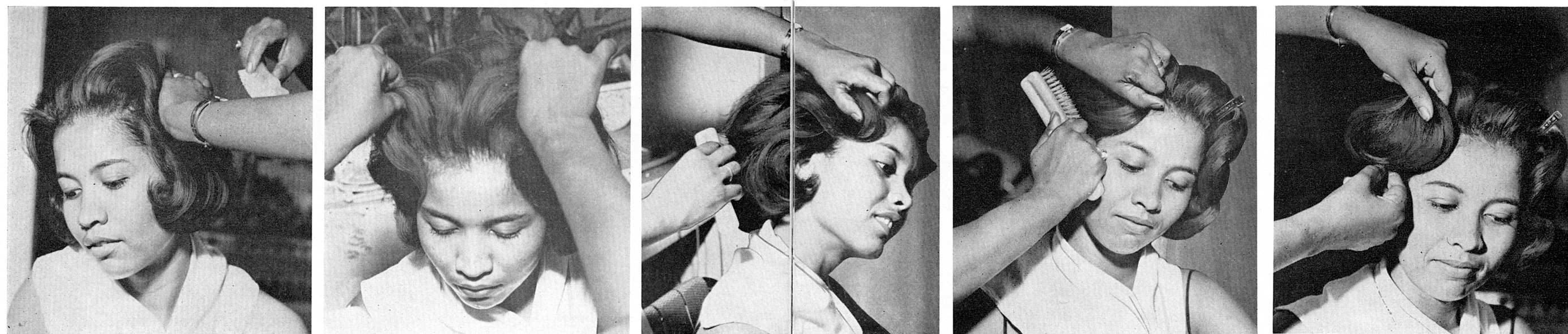
I STYLE MOSTLY BY BRUSH

• by DOROTHY BIGGERS-SNEED, La Coiffure House of Style, Tucson, Ariz.

I've been taught the importance of the brush in a comb-out for a smooth line. I've been taught to very seldom use the comb and I only do so when I want to tease the hair.

• First photo at the far left, we test the hair to see if it's dried properly. With such large rollers, the normal drying time is about 45 minutes.

• After the rollers are all removed, we brush the hair completely.



• No. 48 IN OUR "GREAT ARTISTS SERIES"

When a setting has been done correctly, we can let the hair take its own form for it will almost mold itself. In handling a comb-out, never be afraid to work with the hair. You master it, not it masters you. Your hands are your best tools. The brush helps you keep your lines smooth.

• First arrange the front section for height. Next start to tease the hair from the nape area. I continue to tease it so that each layer of hair can be laid on top of the bottom layer and this will give it the full-blown appearance.

• After the desired shape for the sides and back is obtained, I again go back to work on the top section. Now I get the half wave and the kiss curls at the sides.





● *“Anniversary Coif”*