

THE  
**FULLER**  
BRUSH MAGAZINE

PRESENTS

**PARTY  
TIME**

by Ruth Brent



for: Tots  
Teens and Grown-ups

Please — look through this interesting book. I'll be back in a day or two to call on you and give you another free Fuller Gift.

Note: Please do not place magazine in mailbox. Your Fuller Brush Dealer



# PARTY TIME

The gracious custom of entertaining in the home has undergone radical changes in recent years. Gone are the days when white damask tablecloths, crystal stemware, bone china were the only acceptable table appointments. In their place, in today's informal way of life, we have easy-to-care-for fabrics, colorful pottery and glassware, inexpensive, yet attractive basketware. Frankly, most American women welcome the change. They are eager for fresh ideas for menus, party table settings, entertainment. On these pages you'll find a treasurehouse of these ideas. On the back cover, printed in bold type, are scaled drawings and directions for making the decorations. You will probably think of many more.

The hostess, usually without household help, must act as organizer, maid-of-all-work, cook and waitress. As you all know, this creates a problem. How can she coordinate all these tasks? With this in mind, we've prepared a schedule and check-off list which will enable the hostess to plan and prepare everything in advance, yet be carefree and fresh as a daisy when the first guest rings the bell.

**HOW TO PLAN YOUR PARTY.** To guarantee that everything will go smoothly, write it all down in advance. Here is my formula:

Use 4 pieces of paper and a sharp pencil.

Page 1 . . List type of party, date, guest list, menu, recipes.

Page 2 . . Make grocery list and miscellaneous list such as flowers, candles, cocktail napkins, place cards, favors, prizes and equipment for games. Also on this page plan your table setting. How are you going to serve? What entertainment do you plan?

Page 3 . . Schedules:

**Approximately two weeks ahead:** Consult with your husband your guest list, menu, other plans. If you are going to have help, make arrangements. Invite guests; plan menu; plan entertainment.

**Several days ahead:** Shop for groceries; check clothing for party; make up everything possible ahead of time — dressings, frozen desserts etc; check linen, press if necessary, polish silver, china, glassware; do you need to borrow anything?

**The day before:** Clean house; prepare as much of the party food as possible; wrap prizes and assemble equipment for games; set the table. Check-off list for buffet supper: cloth, napkins, plates, silver, salts and

peppers, centerpieces, candles, serving forks and spoons, serving dishes. On side table place water goblets, cups and saucers, coffee service.

**Party Day:** Make a list of unfinished tasks for the day. Try to finish food preparations in the morning; tack up menu in kitchen; estimate how long it will take to re-heat your casseroles, make your salad etc. and write a schedule for the period just before serving time so that all will be ready at one time. Last, but not least, — look forward eagerly to having your friends in your home. Your serenity, high spirits and loving welcome at the door will do more to assure party success than any other factor. **HAPPY ENTERTAINING!**

*Ruth Brent*



Copyright 1963, The Fuller Brush Company



**RUTH BRENT** is a nationally known author, lecturer, columnist and consultant on home entertaining and party decorating.

She has been, and continues to be, active in club work and volunteer activities, and is a qualified writer on all social aspects of these activities.

## Tracery • A TRIUMPHANT FRAGRANCE CREATION

*A delicate interlacing of exquisite floral notes with the warmth of woody and mossy accents*

**32B. Dusting Powder.** Snowflake-light, absorbent. Delightfully fresh, clean fragrance. Effective deodorizing qualities. Soft, downy puff. Permanent, plastic container. . . . . (6 oz.), \$2.79. (Refill \$1.59).

**35B. Powder Sachet.** Perfume in powder form. A fragrance at once subtle and provocative. To delicately scent skin, linens, lingerie. In plastic squeeze bottle. . . . . (1¼ oz.), \$1.59.

**36B. Cream Sachet.** Perfume in cream form. To smooth on wrists, arms, inside elbows—at the nape of the neck. Quickly absorbed—long-lasting, lovely fragrance. . . . . (1 oz.), \$1.49.

**51B. Toilet Water.** A blend to stir the senses. Refreshing for both daytime and evening wear. . . . . (4 oz.), \$1.75.

**52B. Pearled Bath Oil.** The champagne of bath oils. One capful poured on the bath water offers a lavish assortment of "oil pearls." The delightful fragrance and relaxing softness transmits its smoothness to the skin. . . . . (4 oz.), \$1.89.

**54B. Essence of Cologne.** To lavish a symphony of enchantment upon the wearer. Gift wrapped extravagantly in colorful, rich foil. Glittering, chisel-cut keepsake bottle. (7½ oz.), \$5.00.

**55B. Metered Perfume Mist.** Hundreds of exquisitely fragrant measured sprays. To be sprayed sparingly on the body, into the hair (a little goes a lingering way). Cushioned valve. . . . . (1 oz.), \$2.98.

**59B. Spray Cologne.** A harmonious blend of subtle winsomeness. Always right for a touch of lavish loveliness. Always lighter than perfume. . . . . (3 oz.), \$2.98.

**62B. Bath Soap.** Three exquisitely etched and easy-grip cakes. Enchantingly fragrant. French milled, long-lasting. Creamy lathering in hard or soft water. . . . . \$1.69.



62B  
\$1.69

51B  
\$1.75

52B  
\$1.89

36B  
\$1.49

35B  
\$1.59

55B  
\$2.98

59B  
\$2.98

32B  
\$2.79

54B  
\$5.00





**SETTING THE SCENE**  
 The most glamorous and distinctive of all parties is the Hawaiian Luau. Exotic flowers, flamboyant colors, soft lights and Hawaiian music all add up to that "magic something". Here tropical atmosphere has been created by using fish nets in bright colors, for walls and table, Japanese fishing floats, a gaily decorated surf-board. Tropical fish, pinned to fish netting and also used for place cards are cut of construction paper. Guests sit on colored cushions at low plywood table. Placed here and there are large leaves adorned with blossoms. Candles are in cork fishing floats. Serving platters and bowls are of wicker or wood. Note Bird-of-Paradise centerpiece made of pineapple and cherries. No plates are used as traditional finger foods are featured. Terrycloth napkins are the answer to this.



**Blue Hedge . . .**

the fragrance that whispers it's you

- 32E. **Dusting Powder.** Snowflake-light, exquisitely fragrant. Complete with a soft, downy puff packaged in a lasting plastic container. . . . . (6 oz.), \$2.25.
- 35E. **Powder Sachet.** Perfume in powder form. To delicately scent skin, linens, lingerie. . . . . (.7 oz.), \$1.20.
- 36E. **Lotion Sachet.** A long-lasting fragrance to apply direct to the wrists or on the body. Body warmth accentuates its classic elegance. . . . . (1/2 oz.), \$1.35.
- 51E. **Toilet Water.** For a light, long-lasting and distinctively rich floral blend fragrance. Splash on the skin or spray on the hair for lavish loveliness. . . . (4 oz.), \$1.50. (T-4 Atomizer, 75¢ extra.)
- 52E. **Bath Oil.** Offers a delightful feeling of softness to the water while leaving the skin perfumed, velvet-smooth and satiny to the touch. Leaves you luxuriously refreshed. . . . (4 oz.), \$1.65.
- 57E. **Cologne Deodorant Mist** for a sure and long-lasting deodorant, a refreshing cologne as well. . . . . (4 oz.), \$2.09.
- 58E. **Purse Perfumer.** Holds a reservoir of lingering spray. Speeds out just the required amount. The floral blend with distinctively rich overtones is caressingly lovely. It goes where you go. . . . . \$2.98. (Refill, 58EE, \$1.49.)
- 59E. **Essence Mist** in Blue Hedge's distinctive and rich floral blend to spray sparingly on the body. Economical — a little goes a long way. . . . . (2 oz.), \$2.69.
- 62E. **Bath Soap.** You'll love the luxury size, the lavish creamy lathering in hard or soft water . . . the light and delightful fragrance of this gorgeous, French-milled, long lasting soap in Blue Hedge. Two lavish cakes to a package. . . . . \$1.39.

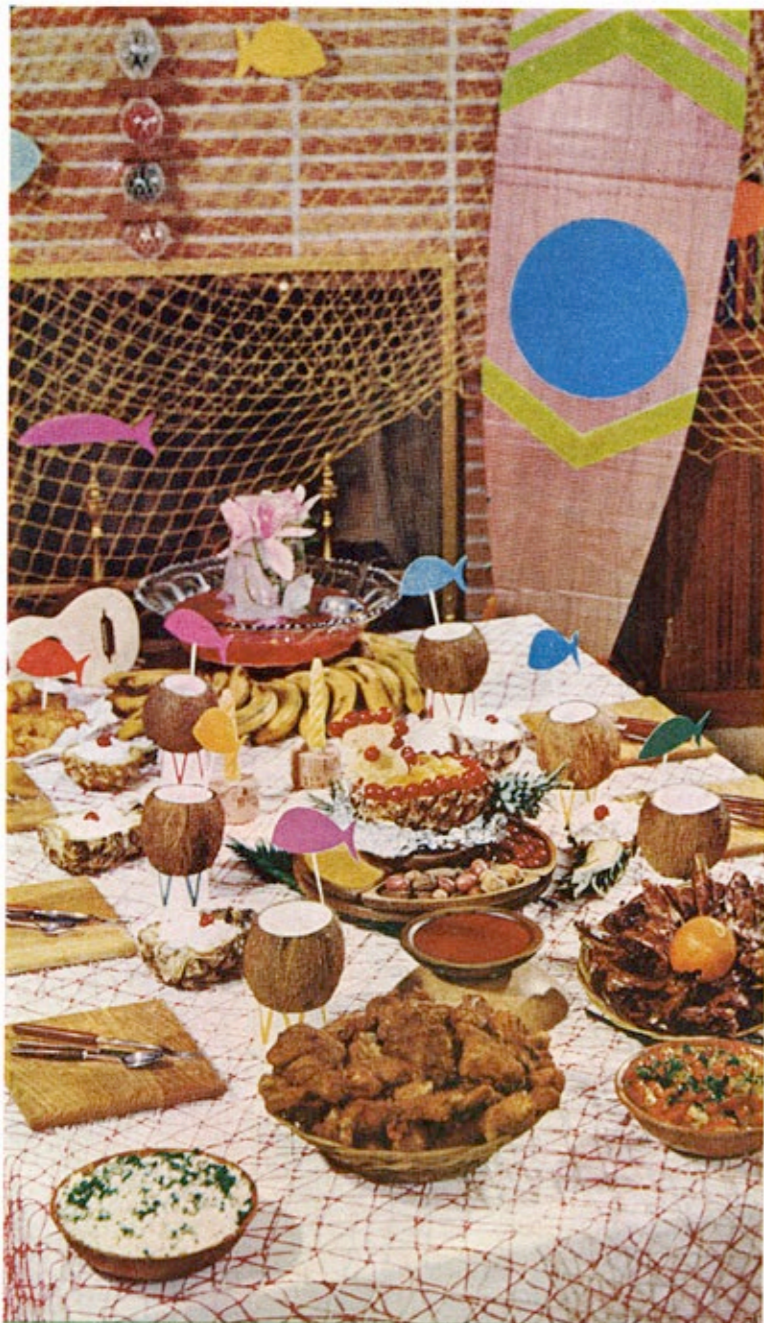
from a **Misty Garden . . .**

A lilting floral fragrance

- 32S. **Dusting Powder.** So snowflake light — so exquisitely fragrant. Fluff on yourself after bathing for skin-smoothing softness. Lavender-backed white velour puff in a handsome and lasting plastic container. . . . . (6 oz.), \$2.79. (32SS refill \$1.59.)
- 35S. **Powder Sachet.** Misty Garden's lilting floral-fresh fragrance in powdered form. To delicately scent skin, linens, lingerie. In plastic squeeze bottle to poof out its lingering loveliness. . . . . (1/4 oz.), \$1.79.
- 36S. **Cream Sachet.** Perfume in cream form. The lilting floral fragrance adheres so delightfully to your skin. . . . (1 oz.), \$1.59.
- 51S. **Toilet Water.** Splash on the skin or spray on the hair for lavish loveliness. Refresh yourself enchantingly by touching its magic to your temples and patting it on your neck. . . . . (4 oz.), \$1.89. W-4 Atomizer available for 75¢.
- 52S. **Floating Bath Droplets.** Dash a few drops in your bath water and relax in the luxury of a flower-fragrant tub, or smooth a few drops on the skin before or after bathing for its floral loveliness. . . . . (1/2 oz.), \$2.39.
- 58S. **Purse Perfumer.** A reservoir of enchanting sprays. And you can take it with you! Speeds out just the required amount! For all day and evening use too. . . . \$2.98. 58SS refill, \$1.49.
- 59S. **Spray Cologne.** Spray sparingly on the body and into the hair for flower-fresh and long-lasting loveliness. (3 oz.), \$3.29.
- 62S. **Bath Soap.** French milled and exquisitely fragrant. Lathers in hard or soft water. Three easy-grip cakes enchantingly etched with flowers . . . from a Misty Garden. . . . . \$1.79.







This delicious Polynesian feast consists of:  
**Hawaiian Fruit Punch\***  
**Batter-Browned Chicken**    **Baked Rice and Parsley**  
**Shrimp with Hot Sauce**    **Salad**  
**Island Spare Ribs**  
**Aloha Ambrosia Flambe' Dessert**

To make dessert: Combine 2 cups each, pineapple chunks, Mandarin oranges, cocoanut, commercial sour cream. Chill thoroughly. For containers, use pineapple halves which have been sliced in half lengthwise, crown and all, then scooped out. To serve this dessert flaming, top each portion with a sugar lump which has been soaked in lemon extract. Arrange on tray, dim the lights, ignite sugar lumps and bring to table flaming.

\*An exotic conversation piece is the artificial orchid frozen in a large piece of ice for the punch bowl.

## Pamper Yourself . . . the Junior Miss and . . . Someone Special

**16BB. Lanolated hand care.** House of Fuller lanolated Hand Cream is rich-textured, soothing. . . . (8 oz.), \$1.15.

**18A. Hormone Face Cream** relieves symptoms of dryness and helps "cushion" the skin. Contains 10,000 I.U. of natural estrogenic hormones per ounce plus precious smoothing emollients. Wear overnight or daytime under makeup. Smooth on one-third teaspoonful daily. . . . (3 oz.), \$2.19.

**25AA. Hormone Hand Lotion.** The skin-soothing hand-care mate to Hormone Face Cream. Gentle and velvety-smooth. Contains 5000 I.U. of natural estrogenic hormones per ounce. Relieves symptoms of dryness and helps "cushion" the skin. Smooth on three-quarters of a teaspoonful daily. Ask about the handy P-4 dispenser. . . . (8 oz.), \$1.40.

**25C. House of Fuller Hand Lotion.** Rich in lanolin . . . for satiny-soft, smooth hands. Helps prevent dry, chapped skin. . . . (12 oz.), \$1.29.

**25R. The First Rose Hand Lotion.** Caressingly soothing. Rich in lanolin. For your favorite princess. . . . (4 oz.), \$1.29.

**28A. Lanolin Enriched Body Lotion.** 12 ounces of smoothing, all-weather protection for the whole family. Dependable protection against chapping, chafing. Permits even suntan without burning. Helps correct rough, flaky skin. . . . \$2.19.

**28JJ. After Bath Beauty Mist.** Luxurious, relaxing treat. Counteracts and helps to correct dry skin. Delicately scented with rare conditioning oils. Soothes, smooths, softens, lubricates and refreshes the skin. . . . (6½ oz.), \$2.19.

**32R. The First Rose Bath Powder.** Bathtime can be so luxurious with this delicately fine, delightfully scented Bath Powder. Boxed in pink and permanent plastic. . . . (4 oz.), \$1.79.

**32X. Dusting Powder.** Snowflake-light powder with gold lamb's wool puff. In handsome, permanent plastic. . . . (6 oz.), \$3.79.

**52J. Bath Bouquet.** A big and luxurious body and bath treat. Your bath water turns caressingly soft . . . your skin, velvet-smooth, your body exhilarated and delightfully fragrant. Leaves no bathtub ring. . . . (12 oz.), \$2.19.

**52R. The First Rose Bubble Bath.** Myriads of bubbles to envelop her in cloud-soft splendor. . . . (4 oz.), \$1.29.

**59J. Midnight Mood Spray Essence.** A tantalizing, distinctively chic and sophisticated fragrance. A lighter-than-perfume, heavier-than-cologne mist. . . . (1.25 oz.), \$3.25.

**59K. Night Fire Spray Essence.** A haunting, warm and delightfully gay fragrance. A lighter-than-perfume, heavier-than-cologne mist. . . . (1.25 oz.), \$3.25.

**59R. The First Rose Spray Cologne.** Such a lovely fragrance for the Junior Miss. Young-in-spirit spray. . . . (1.75 oz.), \$1.79.

**59Y. Golden Accent Perfume Mist.** Aristocrat of fragrances! So frankly feminine. Holds over 1000 measured sprays. A specially designed "cushioned" fingertip trigger releases with a velvet touch its meticulously metered allure. . . . (2 oz.), \$5.00.

**63CC. Lotion Creme Shampoo.** Rich-lathering, gentle and specially formulated for normal, oily or dry hair. Penetrates right to the roots to leave both hair and scalp immaculately clean. . . . (8 oz.), \$1.35.

**63R. The First Rose Shampoo.** To crown her hair with regal highlights. Rich-lathering. . . . (4 oz.), \$1.29.

**70CC. Lotion Creme Hair Rinse.** A superb hair conditioner! Seals in glamorous shampoo gleam. Smooths hair for easy, tangle-free combing. Leaves it soft and beautifully manageable. Ideal for dry or frizzy hair. . . . (8 oz.), \$1.35.

**84CC. House of Fuller Push-up Deodorant Stick** for day-long dainty freshness. . . . \$1.30.



84CC  
\$1.30

28JJ  
\$2.19

25C  
\$1.29

52J  
\$2.19

16BB  
\$1.15

P-4

25AA  
\$1.40

18A  
\$2.19

63CC  
\$1.35

59J  
\$3.25

59R  
\$1.79

25R  
\$1.29

63R  
\$1.29

70CC  
\$1.35

59K  
\$3.25

59Y  
\$5.00

32R  
\$1.79

52R  
\$1.29

32X  
\$3.79





Anything goes at a Luau — even The Twist to the exciting beat of the Hawaiian War Chant. In the absence of a guitarist, use long playing Hawaiian records readily available at music stores or through mail order catalogues. Music is of prime importance in creating the right mood. Young guests are gaily attired in beachcomber hats, vivid leis, muumuus, bright shirts and

flowered sarongs. These are lengths of yard goods draped on guests in a matter of seconds. Ordinary brown wrapping paper, 36-inches wide was converted into a grass skirt by folding back six inches to make a firm waistband, then cutting the remainder into inch strips. The crepe paper Palm tree adds a touch of the islands and again netting is used as a background.

## ... so much for glamour

**16CC. Luxurious hand protection.** House of Fuller's aerosol Rich Puff Hand Cream puffs out a velvety fluff of lanolated cream with silicone to smooth hands to new beauty. . . . (10 oz.), \$2.09.

**24. Make-Up Lotion.** A radiantly fresh and beauty-conditioning make-up. Will not streak or fade. Five soft shades: Natural Blush, Peach Rachel, Warm Beige, Rose Beige, Sun Gold. . . . (1.2 oz.), \$1.20.

**30. Tortoise Shell Compact.** Rich tortoise shell plastic pressed powder compact. Sheer make-up and powder in cake form . . . same five lovely shades as Make-Up. . . \$1.59. (refills, 30¢).

**31. Pressed Powder Case.** Snow-white'n gold plastic pressed powder case. Sheer make-up and powder in cake form . . . same five lovely shades as Make-Up Lotion. . . . \$1.10.

**34. Deluxe Compact.** Polished and gleaming pressed powder compact. Sheer make-up and powder in cake form . . . same five lovely shades as Make-Up Lotion. . . . \$2.50 (refills, 30¢).

**40. Eye Shadow.** To dramatize one's makeup. Fine textured cream. Blends smoothly and easily. Lipstick-type swivel case. In three shades, blue, green or turquoise. . . . \$1.19.

**43. Mascara Wand.** Gently coats each lash. Non-smear, non-spill. Stroke upwards on upper lashes. Easy to apply. In three basic shades, blue, brown or black. . . . \$1.59.

**45. Creamy Lipstick.** Luscious, smooth-textured, non-drying. Eight radiant shades . . . ranging from pinks to reds. . . \$1.25.

**45. (AA through HH) Creamy Refills and 47 (AA through HH) Lasting Color Refills.** All refills fit either case so you may choose your favorite shades in one or both formulas and interchange at will (not shown). . . . 79¢ each.

**46. Nail Polish.** Long-lasting, hard finish. Five fashion-right shades that blend with House of Fuller Lipsticks and a Clear Natural. . . . (½ oz.), 69¢ each.

**46J. Under-Over Coat.** Colorless. Use before and after applying nail polish to make it last longer, discourage chipping. . . . (½ oz.) 69¢.

**46R. Nail Polish Remover.** In-a-twinkle action. . . (2 oz.), 60¢.

**47. Lasting Color Lipstick.** Moisturized for hours of non-drying, non-caking smoothness. Eight radiant shades . . . ranging from pinks to reds. . . . \$1.25.

**49. Eyebrow Pencil with built-in sharpener.** Goes on evenly. Offers a flattering line to eyebrows—outlines the eyes. In two basic shades of brown and black. . . . \$1.29. (refills, 59¢).

**50. Liquid Rouge.** For a fresh blush of color on the cheeks. Three skin-coddling shades . . . Soft Pink, Coral Red, Red Red. 79¢.

**71. Hair Dressing and Conditioner.** Gives new sparkle to dull, dry and unmanageable hair. Hair brushes to a gleaming gloss, becomes wonderfully manageable. . . . (6 oz.), \$1.49.

**71C. Set For Sure Hair Spray.** Contains lanolin esters — no lacquer. Use for a lasting set, a quick spruce-up or to style your hair to a desired shape. Controls and conditions the hair for a natural, stay-in-place look and feel. Holds soft waves while giving body and a lustrous sheen. . . . (8 oz.), \$1.79.

46R 60¢  
46 69¢  
43 \$1.59  
49 \$1.29  
40 \$1.19  
47 \$1.25  
45 \$1.25  
46J 69¢  
71 \$1.49  
71C \$1.79  
16CC \$2.09  
24 — \$1.20  
30 \$1.59  
31 \$1.10  
34 \$2.50





**WELKOMNA TILL SMORGASBORD** There's something for everyone at a Smorgasbord and it's such fun to sample strange and exotic foods. Traditionally, a Smorgasbord includes fish, cheeses, baked beans, molded salads, stuffed eggs, meat balls, a variety of breads including Danish Pastry for those with a sweet tooth . . . . . Note that the meat and

fish dishes are distinguished by paper cut-outs of fish or steerhead. Scandinavian dolls, flags and 24-inch Swedish tapers on a wood base covered with an artificial blossom arrangement add authentic decor for the Smorgasbord theme. Strive for a tiered effect at back of table to display foods to better advantage.

## for Man and Boy alike . . .

**82E. Silver Label Talc.** Finely textured . . . smooth as silk. Flesh-tinted for a natural look. . . . . (4.75 oz.), \$1.59.

**82F. Silver Label Splash-on Refresher.** The ideal "top-off" to a bath or shower. Citrus-crisp fragrance. . . . . (6 oz.), \$1.99.

**82H. Fresh, tangy After-Shave.** House of Fuller's distinctively smart and handsome After-Shave Lotion. So properly masculine too! . . . . . (6 oz.), \$1.89.

**87G. Rich Foam Shave Cream.** The finest shave cream ever! A beard-softening lather at fingertip touch. 10 ounces. \$1.35. Also, 10 ounces Mentholated Shave Cream. . . . . 87M, \$1.35.

**87H. Bracing After-Shave Lotion.** Fresh, clean and masculine fragrance. As bracing as all out doors. . . . . (6 oz.), \$1.20.

**87J. Regatta Pre-Electric Shave Lotion** sets up the beard for a close, clean shave. Also dries perspiration. Lubricates shaver head. Cuts shaver friction to a minimum. Fresh outdoor fragrance. . . . . (4 oz.), \$1.09.

**87R. Roll-on odor protection.** A wonderfully effective antiperspirant and deodorant! No messy fingers, no drip, no waste. Just roll it on. Guards freshness, check perspiration. Safe for fabrics. . . . . (1.75 oz.), \$1.09.

**88A. Regatta Jr. Hair Trainer.** Non-sticky, non-greasy. Keeps the youngster's unruly hair in place. . . . . (6 oz.), \$1.20

**311. Shoe Polishing Kit.** Ideal for the family. For dad's, mother's, children's shoes. Perfect for travelling. Great, too, for sprucing up shoes with brush and cloth. Compact and durable kit holds 100% pure bristle brush, applicator and 18 inch by 4 1/4 inch polishing cloth. . . . . \$2.98.

**571. Boy's Hairbrush and Comb Set.** Start good grooming habits young to guarantee the neatest boy in town. Just like Dad's in handsome mahogany plastic but just Junior's size. The same high quality, too. . . . . The set, \$2.59.

**573. Clothes Brush** of moderately stiff nylon tufts. Both handsome and serviceable. Mahogany plastic handle and back. \$3.40.

**574. Military Brush Set.** A handsome, heavy, well proportioned and easy-grip set. Stiff black Krimpt nylon tufts are set in curved brush face to give proper flare. \$6.49 pair. (Military Brush Set also available in Pure Boar Bristle. . . . . 570, \$9.98 pair.)

**747. Spray-Shine.** Now the quickest, brightest shoe shine ever with just a spray and a buff of the shoe with a soft cloth or paper tissue. Non-staining. Contains silicone and leather-softening lanolin. Use also for handbags, belts and luggage. Ideal for children's shoes; for traveling or at the office. . . . . (7 oz.), \$1.39.





Featured!

Concentrated Room Deodorizer



710



627



869

America's most Popular Cleaning Team

**FULSOL HOUSEHOLD DEGREASER** now in unbreakable plastic bottle. Quickly dissolves soft or baked-on grease. No hard scrubbing necessary. For oven cleaning, cleaning pots and pans, roasters, grills, painted walls, woodwork, kitchen cabinets, venetian blinds, plastic shower curtains or garage floors. . . .

**FULLERS FAMOUS STAINLESS STEEL SPONGES.** They do the work for you! Won't rust, sour or rot. No loose ends to snag, catch or cut. Convenient . . . they expand to rinse clean. Made of one continuous coil, manufactured to the most rigid specifications of Grade A stainless steel. Three to a package. . . .

Both Fulsol (1 quart) & Steel Sponges (3) \$3.33

**HOLLY BERRY ROOM DEODORIZER.** 3 ozs. of this cheery, woody, fragrance is equivalent to 18 ozs. of usual aerosol spray!

Cushioned valve measures just one spray at a time. Approximately 900 sprays in each container. The two, \$3.78.

Featured!



87N

56RR

Positive Underarm Protection . . . For Him . . . For Her

**REGATTA SPRAY DEODORANT FOR HIM.** Checks perspiration and banishes odor with just a spray. Dries immediately. Clean, fresh and light fragrance. . . .

**ROLL-ON ANTI-PERSPIRANT FOR HER.** Offers all-day protection from odor and perspiration. Not greasy or sticky. So easy to use . . . just roll it on. No dripping . . . fingers never touch lotion. Safe for fabrics. . . . The two, \$2.18.\*

\*Plus 10% Cosmetic Tax

Featured!

Soothing treatment and relief of Athlete's Foot



ANTISEPTIC BACTERIOSTATIC FUNGISTATIC

25BB (no cosmetic tax)

**HOUSE OF FULLER FOOT SPRAY.** Especially beneficial for Sales People — Mailmen — Athletes, etc. A non-greasy therapeutic treatment to bring comfort to weary, overheated and shoe-sore feet. Spray direct on feet and into shoes and on stockings to soothe and *prevent* infection. Healing action also offers an effective treatment for ringworm and similar conditions. Both \$4.18.

Featured!

KILLS MOSQUITOES, ANTS, HORNETS, etc.



748

722

740

MULTI-PURPOSE INSECTICIDE

SPRAY ON YOURSELF

**NON-TOXIC INSECTICIDE.** Spray indoors or outdoors for its death-to-bugs-dealing mist. Kills flying or crawling insects. Guarantee picnic pleasure by spraying outside ground area. 12 ounces, \$2.19.

**HOME AND GARDEN SPRAY.** Protect both your house and outdoor plants, vines, evergreens, etc. from all types of garden pests, including Japanese beetles. Effective too, as an outdoor patio spray. Deadly too, indoors, to flying or crawling insects. . . . 12 ounces, \$2.19.

**FUL-SCAT.** Spray on the skin . . . on clothing for bug protection while camping, picnicking, gardening, golfing and indulging in other outdoor activities. . . . 12 ounces, \$2.19. A must for the sportsman. He'll appreciate the ease of carrying and handling its 6 ounce size. For use on the golf course, when fishing, etc. (not shown). . . . 719 \$1.29.





**SING ALONG** Who can resist getting into the act with this jovial ringleader directing the singing? The wise hostess keeps on hand typed lyrics of old favorites and the old player piano does the rest. "The Piano Roll Blues" is

really getting a work-out as this gay sextette makes the rafters ring. The important thing is to plan your evening's entertainment ahead of time — before your guests arrive. Make it fun by making it different.

**386. Flesh Brush.** Use for bath or massage. Stimulates circulation. Cleanses pores. Medium-stiff white nylon bristles. . . \$3.29.

**451. Handsome Hand Mirror.** Deluxe double-faced Hand Mirror, one side regular, the other magnified. . . . \$9.45.

**455. Deluxe Stand Mirror.** Original and handsome design. Two flawless and beveled glass mirrors, regular and magnifying. Framed in crystal-clear acrylic plastic. Folds flat for traveling. Complete with stitched green traveling case. The two (455 and 932), \$9.99. Also available, but not shown, same design in ivory plastic. With case. . . . 453 and 932, \$8.99.

**511. Tuck-Away Travel Brush.** Tucks easily into suitcase, automobile glove compartment, office desk or locker. Seven inches long. Bristles properly stiff and resilient. . . . 99¢.

**512. Open Clothes Brush.** Will lift dust from heavy fabrics, yet will not injure delicate materials. Both sides of brush may be used. Curved to fit back and shoulder. . . . \$1.79.

**519. Girl's Hairbrush and Comb Set.** Here is the gift any little girl will cherish. It's the answer, too, to encourage good grooming. They're pearly pink replicas of Mom's Bristlecomb Hairbrush and Comb and every bit as pretty and serviceable. \$2.59.

**521. Deluxe Spiral Bristlecomb.** The special design of this crystal-clear brush assures thorough penetration of the hair to reach the scalp for healthy stimulation. . . . \$3.15.

**525. Pure Boar Bristle Bristlecomb!** The ultimate in luxurious brushing efficiency. Contains more and stiffer tufts for more efficient hair grooming. Pure imported boar bristles. . . \$7.50.

**530. Our deluxe Bristlecomb** with white Krimpt nylon tufts set in jewel-like clear plastic and sturdy matching Comb #661 with coarse and fine teeth. . . . \$3.64.

**533. Pure Boar deluxe Pocket Bristlecomb.** Perfect for handbag, traveling or for at the office use. Made of the finest pure boar bristle obtainable. Stiff bristles for efficient brushing. Ivory plastic handle and backing. . . . \$3.89.

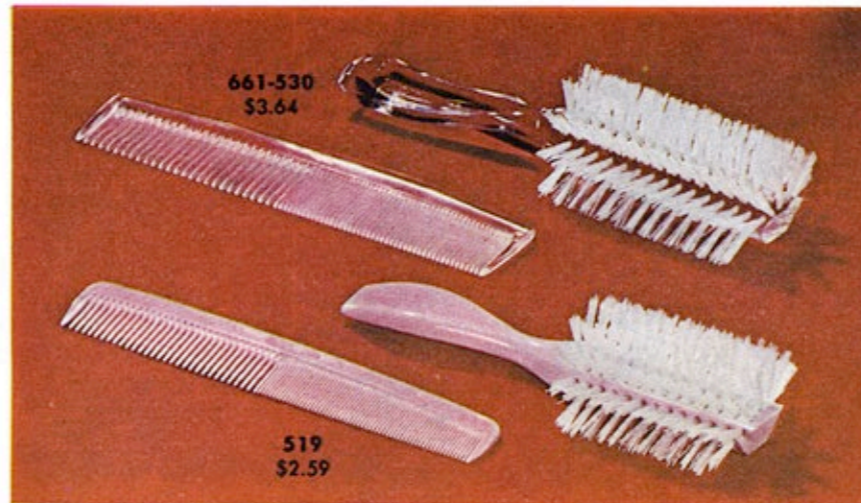
**537. Professional-type Brush** of pure boar bristle. Ninety tuft, six row of 3/4 inch trim for added stiffness. In handsome ivory plastic. \$4.89. 539 (not shown), same type as above but 1 inch white nylon bristles, backing of crystal-clear acrylic plastic, \$2.99. 538 (not shown), same as above but 1 inch white nylon bristles, backing of plastic in soft pink shade. . . . \$2.49.

**566. Bath Brush.** Pink plastic with medium-stiff white nylon tufts that retain resiliency. Special hand-grip construction to prevent slipping from soapy hands. Long handle. . . . \$4.99.

**588. Ivory Plastic Clothes Brush.** This handsome brush has black nylon, moderately stiff tufts for efficient brushing. . . \$2.90.

**636. Brush Cleaner Comb** reaches between tufts to clean brushes of hair and lint. . . . 59¢.

**660. A comb for every type hair-do** — for every occasion. From top to bottom: Comb Cleaner cleans between teeth of combs quickly, easily. Brush rotates in handle. Pocket Comb for him, her or junior. Small, durable. Bobby Comb designed for women, with a short hair-do. Tail Comb with uniform teeth is ideal for forming curls. Comb for him, her or junior, with coarse and fine teeth. Lady's Large Polypropylene Comb with coarse and fine teeth. . . . \$2.49.







Mother gets into the spirit of the party as she models rakish clown hat for an admiring audience.

Canopy for table is made by suspending an open umbrella from a ceiling fixture. Stripes and scalloped edges add a carnival spirit. An alternate canopy is a round tablecloth with a tiny hole in the center for the umbrella tip. Pretty, pink-bowed birthday cake, topped with merry-go-round, doubles as centerpiece. This gay carousel is easily assembled by pasting little cut-outs of horses on a piece of stiff white paper, then stapling the ends. Or — you could use a round hat box. Gummed tape is used for the vertical holds. Horse, saddle and spots can be cut from gummed paper in various colors. See back cover. The same pattern may be used for the hobby horse.

To make a balloon background, trace around half dollars, cups, saucers, then cut several at one time in various colors out of gummed paper.

## AEROSOLS FOR MOST EVERY NEED

- 700. Lilac Mint Room Deodorizer.** The housewife's favorite! The soft, sweet scent of lilacs with the added zest of mint for efficient deodorizing. Easy-to-use aerosol container. (12 oz.), \$1.99. (16 oz. container, 745, \$2.39).
- 701. Cedar Pine Room Deodorizer.** A true and wonderfully effective pine grove fragrance to dispel unpleasant odors. In easy-to-use aerosol container. (12 oz.), \$1.99. (Also available in 16 oz. container. 741, \$2.39).
- 703. Fresh-Air Room Deodorizer.** Brings the clean, fresh fragrance of the outdoors — indoors to dispel unpleasant odors. (12 oz.), \$1.99.
- 705. Lavender Spray.** A completely refreshing, clean and true lavender fragrance to freshen clothes closets and linen cabinets, bureau drawers. (6 oz.), \$1.69.
- 722. Ful-Scat Insect Repellent.** Twelve ounce size to repel such insects as mosquitoes, flies, gnats and chiggers. \$2.19. Also available — a must for the sportsman! Six ounce size for easy toting on golf course, fishing, camping, etc. (719, \$1.29).
- 724. Pest Spray.** Put an end to invading roaches, ants, silverfish, water bugs. Leaves a deadly, long-lasting residue. Spray on insect nests, along cracks and paths they follow into house. (12 oz.), \$1.69.
- 725. Garbage Can Spray.** Deodorizes and sanitizes metal garbage containers. Reduces odors, retards maggot infestation, discourages flies, insects, animals. (12 oz.), \$1.69.
- 726. Dog Spray** rids dogs of ticks, fleas, keeps kennels fresh smelling. (11 oz.), \$1.79.
- 727. Spot Remover Spray.** Easy to use — leaves no messy cleaning rings. Spots vanish like magic. Cleans oil spots and greasy stains from all dry cleanable fabrics, clothing, rugs, car interiors, etc. (12 oz.), \$1.79.

- 740. Non-toxic Insecticide.** Safe to use near food, children and pets! A death-to-bugs-dealing mist. (12 oz.), \$2.19.
- 744. Spray'n Sparkle.** Just spray on to wipe dirt off. Economical, a little does a large area. Aerosol cleaner with silicone. Windows, mirrors, woodwork, chrome, enamel and porcelain come sparkling clean. Leaves an invisible dirt-resistant barrier that discourages resoiling. (giant 16 oz. size), 99¢.
- 746. Dust, Clean and Wax with Instant DCW.** Enjoy the beautiful luster of superior waxing with none of the tedious work! Dusts, cleans and waxes with nothing more than a spray and a whisk of a cloth. No waiting, no rubbing, no need to change polishing cloths. And D-C-W's silicone magic leaves an invisible, dirt-resistant barrier that discourages re-soiling. (14 oz.), \$1.69.
- 748. Home and Garden Insect Killer.** For indoor and outdoor use, to kill household or garden pests. Protects house and outdoor plants, vines, evergreens, etc. Deadly too, indoors to crawling insects, mosquitoes, flies, gnats, etc. (12 oz.), \$2.19.
- 749. Duster Spray** to pick up dust — not just move it around. Dust will cling like magic when sprayed on mop or dust cloth. (large 16 oz. size), \$1.99. (729 — 12 oz. size), \$1.79.
- 754. Verbena Mist** created specifically for the bathroom. Scientifically compounded in the Fuller Brush laboratories to immediately refreshen your bathroom. Spray the lovely, lingering and floral freshness of verbena to freshen the air delightfully and dispel unpleasant bathroom odors. Eight ounces. \$1.49.
- 755. Citrus Mist** created specifically for the kitchen. Scientifically compounded in the Fuller Brush laboratories to immediately refreshen your kitchen. Spray the crisp freshness of a flowering lemon grove to freshen the air delightfully and dispel unpleasant kitchen odors. Eight ounces. \$1.49.







Place card holders are plump, perky pigs made of lemons. Slits are made to resemble ears, whole cloves make the eyes, the stem end makes a fine snout, while a twisty tail, made by spiral paring, completes the piglet decoration.

**MENU FOR CLOWN BIRTHDAY PARTY**

- Frosted Sandwich Loaf
- Rainbow Pinwheel Sandwiches
- Stuffed Tomatoes
- Shoestring Potato Chips
- \*Charlie Clown Stuffed Eggs
- Pink, white and orange coconut Ice Cream Balls
- Carousel Birthday Cake
- Limeade
- Pastel Mints

\*Black olive eyebrows, green olive eyes, pimiento mouth



**Everything for Family Health and Well Being**

**25BB. Relief for burning feet.** House of Fuller Foot Spray is the soothing answer for treatment and relief of athlete's foot. Brings relief to hot, aching, burning feet. Helps relieve cause of the trouble. . . . . (5 oz.), \$2.09.

**52AA. Fragrant Pine Bubbling Bath Oil.** Offers billows of refreshing pine-scented bubbles. A treat for the whole family . . . for many months to come. Giant 12-ounce size. . . . . \$2.19.

**52FF. French Lilac Bubble Bath.** For complete and languorous relaxation. Crisp, clean fragrance of lilac breaks through myriads of bubbles. . . . . (large 12 oz. size), \$2.19.

Fuller toothbrushes are available in various sizes, degrees of stiffness and in nylon and unbleached bristle to meet individual requirements for children, juniors and adult members of the family. Packaged individually, in sets of three or six.

**384. Dental Plate Brush** of nylon reaches into plate grooves. . . . . 99¢.

**426. Child's Toothbrush** of soft, white Krimpt nylon. . . . . 35¢.

**434. Junior Soft.** 3 row unbleached bristle. 25 tufts. 3 for 99¢.

**442. Extra Stiff.** 2 row white Krimpt nylon tufts, 13 tufts. . . . . 3 for \$1.15.

**443. Stiff.** Three rows for those who prefer a smaller brush. White Krimpt nylon. 18 tufts. 3 for \$1.15. In 6 pack 456, \$1.99.

**444. Stiff.** 18 tufts. Three row. Natural bristle. . . . . Three pack, \$1.15.

**448. Soft.** 43 tufts, four row nylon. . . . . 3 for \$1.59.

**449. Soft.** 59 tufts. White nylon. . . . . Package of three, \$1.79.

**450. Medium Stiff.** White Krimpt nylon tufts. 25 tufts. . . . . 3 for \$1.15.

**514. Dental Clasp Brush** to clean bridgework. . . . . 95¢.

**610. Denture Cleaner and Polish** cleans full or partial dentures safely; polishes dental metals, porcelain. . . . . (4 oz.), \$1.19.

**652. Toothbrush Holder.** Slotted for six toothbrushes. Each end a peg for other personal brushes. . . . . 40¢.

**780. Mouthwash and Gargle.** Offers pleasant relief from minor mouth and throat irritations. Foamy mouthwash penetrates folds, crevices of mouth. Deodorizes. Soothing, refreshing. (1 pt.), 95¢.

**781. Medicated Nasal Room Spray.** Offers aerosol comfort at once from symptoms of nasal congestion due to head colds or hay fever. Ideal for nighttime use. . . . . (5 oz.), \$1.29.

**782. Spray Body Refresher.** A refreshing and stimulating massaging spray. Cooling, refreshing. Use as a rubdown after bath, exercise or when sick in bed. Massage relieves minor muscle soreness and tension. . . . . (7 oz.), \$1.29.

**789. Vitamin Food Supplement for children** in small, easy-to-swallow capsule form. For children 6 years and older. Contains Vitamins A, C, D, B-1, B-2, B-6, B-12. Niacinamide, Calcium Pantothenate. 100 capsules. . . . . \$2.98.

**791. Vitamin Food Supplement for Adults.** An everyday capsule to help keep them full of normal pep and energy. Contains Vitamins A, D, B-1, B-2, B-6, B-12, C, Niacinamide, Calcium Pantothenate, Calcium, Phosphorus, Iron. 100 capsules. . . . . \$3.49.









## Fuller home-tested products you can depend upon

- 150. Spatter Mop** to wipe up liquid spillage. Invaluable around washbowl, bathtub, kitchen sink. . . . . \$1.65.
- 389. Bathtub Brush**, curved to follow tub contours. White nylon bristles. Long handle of permanent bond plastic. . . . \$1.99.
- 390. Bowl Brush** is curved to reach under rim and into trap. Nylon bristles. Long handle of permanent bond plastic. \$1.99.
- 605. Metal Polisher Cloth**. Removes tarnish and beautifully polishes all soft metals and plastic articles. . . . . \$1.20.
- 612. Ironing Board Pad** of waffle-knit cotton padding. Fits standard 54 inch board. "Cushions" the board for smoother, easier ironing. . . . . \$1.79.
- 629. Ironing Board Cover**. Tailored to fit standard 54 inch board. Cover is scorch-resistant, aluminized. . . . . \$2.99.
- 706-468. Perfumed Toilet Blocks** overcome bathroom odors. Plastic Toilet Block Case. . . . 468, 59¢, 706 (pkg. of 4), \$1.50.
- 739. Pine Aerosol Bowl Clean** deodorizes, freshens and cleans toilet bowls quickly and conveniently. . . . (12 oz.), \$1.80.
- 856. Sponge Cloths**. Two cellulose sponge cloths. When dampened, they clean and dry with one stroke. . . . . \$1.29.

## Your choice of Mighty Moth Weapons

- 641. For de-mothing**. Fuller's Moth Crystal Blockettes are compact, easy-to-use cakes. Several of these Blockettes should be hung in tightly closed closets to repel moths and moth larvae. Six to a package. . . . . \$1.95.
- 644 or 645 and 469. Deodorizing, demothing set**. Large 14-ounce perfumed Deodorant Block 645 will effectively deodorize and leave a fresh smelling bathroom, nursery or sickroom. Doubles also as a highly effective Moth Block to repel moths in a tightly closed storage area up to 84 cubic feet. Large 14 ounce Moth Block 644 will effectively repel moths in a tightly closed storage area up to 84 cubic feet. Your choice of Deodorant or Moth Block with new, de luxe, easy-to-open, compact type Hang-Up Case to hang on wall, door or clothes pole. . . . . 645, (14 oz.) . . . . . or 644 (14 oz.), \$1.29 each. 469, 99¢.
- 646. Moth Crystals**. Use liberally wherever moths and moth larvae might invade. Highly effective in tightly closed space. . . . (2 lbs.), \$2.25. Also available in 1 lb. can. . . . . 643, \$1.29.
- 728. Aerosol Moth Proofer** is the quickest, easier way to moth proof. Kills moths, carpet beetles, their eggs and larvae. Use moth proofer for woolen clothes, upholstery, rugs, blankets. Moth proofs woolens for all season when used as directed. . . . . (giant 16 ounces), \$2.39.

Your choice of de-mothing or deodorizing set — with hang-up case \$2.28 So Easy To Open

## A WELCOMED WISCONSIN VISITOR

About seventy miles east of the twin cities of Minneapolis and Saint Paul, in "America's Dairyland" around Colfax, Wisconsin, there is a Fuller Brush Dealer named Martin Hansen, another welcome visitor to thousand of homes.

Martin, or "Mike" as he is more familiarly called by his friends and customers, has been selling Fuller Brush products for twenty one years. Surprisingly enough, Mike became a dealer quite by accident. A chance remark to a Fuller Brush Manager led to the offer of a dealership. So dubious was Mike of his ability to sell that he refused the manager's offer to help get him started and went out and sold alone.

Except for a two and one half year tour of duty in the U.S. Navy, Mike has appeared regularly at hundreds of homes to fill the need for the many and diversified products of The Fuller Brush Company. Of his dealership he says, "I think a Fuller Dealership offers unlimited opportunity for progress for any individual. I enjoy my work and I am happy in it. I appreciate the good way of life it has provided for my family."

Selling Fuller Brush products is not all of Mike Hansen's life. He is a Past Commander of his American Legion Post and he was Chairman of the Committee in charge of the Legion's annual oratorical contest. He was a trustee of his church.

Today, at 50 years of age, Mike Hansen can look back on nearly a quarter of a century of pleasant and profitable work as a Fuller Brush Dealer and look forward to the many years in the future during which he will continue to be a respected and welcomed visitor to his many loyal customers.



Martin Hansen and his family.



Mike is welcome in the home and on the farm.

Akron, Ohio . . . . . 929-2816	Clifton, N.J. . . . . PR 3-8080	Greenwich, Conn. . . . . NE 7-0266	Miami, Fla. . . . . PL 8-2321	Rochester, N.Y. . . . . BE 5-0430
Albany, N.Y. . . . . HE 9-4791	Columbus, Ohio . . . . . HU 6-7275	Hammond, Ind. . . . . WE 1-5540	Milwaukee, Wisc. . . . . HO 1-7200	Sacramento, Cal. . . . . CI 1-1436
Alltoona, Pa. . . . . WI 2-2561	Dallas, Texas . . . . . ME 1-2900	Harrisburg, Pa. . . . . CE 2-1182	Minneapolis, Minn. . . . . WA 7-9543	Saint Louis, Mo. . . . . JE 5-2593
Atlanta, Ga. . . . . 233-7768	Dayton, Ohio . . . . . AX 8-1021	Hartford, Conn. . . . . 233-9627	Newark, N.J. . . . . 748-2141	Saint Paul, Minn. . . . . MI 8-9125
Baltimore, Md. . . . . ID 3-5755	Dearborn, Mich. . . . . LU 2-0912	Houston, Texas . . . . . JA 4-4497	New Orleans, La. . . . . 822-4380	Salt Lake City, Utah . . . . . IN 6-8666
Birmingham, Ala. . . . . FA 2-1717	Denver, Colo. . . . . FI 5-4469	Indianapolis, Ind. . . . . AL 4-5127	New York City . . . . . 832-4570	San Antonio, Texas . . . . . CA 7-5011
Boston, Mass. . . . . RE 4-1130	Des Moines, Iowa . . . . . BL 5-5891	Jacksonville, Fla. . . . . EX 8-1222	Norfolk, Va. . . . . MA 7-1937	San Diego, Cal. . . . . AT 3-2005
Bronx, N.Y. . . . . TA 4-2350	Detroit, Mich. . . . . 835-0050	Kansas City, Mo. . . . . EM 1-1113	Oakland, Cal. . . . . 832-4570	San Francisco, Cal. . . . . OR 3-6161
Brooklyn, N.Y. . . . . IN 9-8600	Dubuque, Iowa . . . . . 371-7755	Knoxville, Tenn. . . . . 522-4748	Oklahoma City, Okla. . . . . JA 5-0505	Seattle, Wash. . . . . MA 2-4171
Buffalo, N.Y. . . . . NF 4-8880	Duluth, Minn. . . . . 582-2978	Levittown, N.Y. . . . . PE 1-1967	Omaha, Neb. . . . . 341-2480	Sioux Falls, S.D. . . . . ED 8-0011
Camden, N.J. . . . . WO 3-2117	Erie, Pa. . . . . RA 2-4113	Lexington, Mass. . . . . VO 2-7610	Pasadena, Cal. . . . . HI 6-8354	Spokane, Wash. . . . . FA 7-1591
Charleston, W. Va. . . . . RI 4-8411	Evansville, Ind. . . . . GL 6-6256	Long Beach, Cal. . . . . GA 3-0986	Peoria, Ill. . . . . 673-7476	Springfield, Ill. . . . . 544-5924
Charlotte, N.C. . . . . ED 2-4730	Flint, Mich. . . . . HA 3-2576	Los Angeles, Cal. . . . . DU 5-9233	Philadelphia, Pa. . . . . PI 2-9300	Syracuse, N.Y. . . . . HA 2-3191
Chicago, Ill. . . . . 679-4335	Ft. Wayne, Ind. . . . . TR 3-1606	Phoenix, Ariz. . . . . 277-1604	Toledo, Ohio . . . . . GR 5-7321	Upper Darby, Pa. . . . . SU 9-9757
Cincinnati, Ohio . . . . . RE 1-7010	Flushing, N.Y. . . . . FL 9-1411	Pittsburgh, Pa. . . . . SR 1-4973	Washington, D.C. . . . . SP 3-7052	Washington, D.C. . . . . 356-3668
Cleveland, Ohio . . . . . AC 1-2933	Grand Rapids, Mich. . . . . GL 9-7090	Portland, Me. . . . . SP 3-7052	Portland, Ore. . . . . BE 4-5030	Waterloo, Iowa . . . . . AD 2-5335
	Green Bay, Wis. . . . . HE 4-7896	Providence, R.I. . . . . HO 3-9450	Providence, R.I. . . . . HO 3-9450	Wichita, Kan. . . . . AM 7-6581
	Greensboro, N.C. . . . . BR 2-2259	Reading, Pa. . . . . FR 5-6744	Reading, Pa. . . . . FR 5-6744	Worcester, Mass. . . . . PL 7-2758

THE FULLER BRUSH COMPANY, EAST HARTFORD, CONNECTICUT



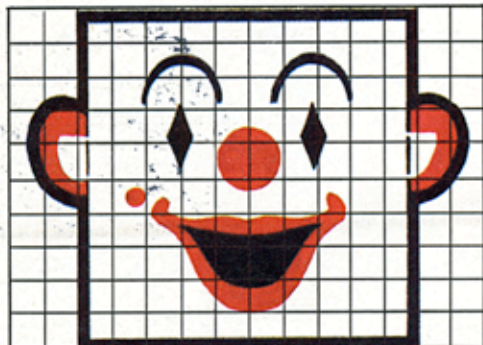
Opportunities to start new and prosperous careers like Martin Hansen's may be available in your community. You can learn more about a Fuller Brush dealership by writing Dept. C, The Fuller Brush Company, Hartford 15, Conn., or telephoning your nearest branch office.

Prices shown herein are suggested retail prices and are subject to change without notice. Prices do not include Federal, State or local taxes. This Catalogue is for the exclusive use of duly authorized Fuller Brush Dealers. L-69 Printed in U.S.A. CC-3-63





**A LION IN CAGE**

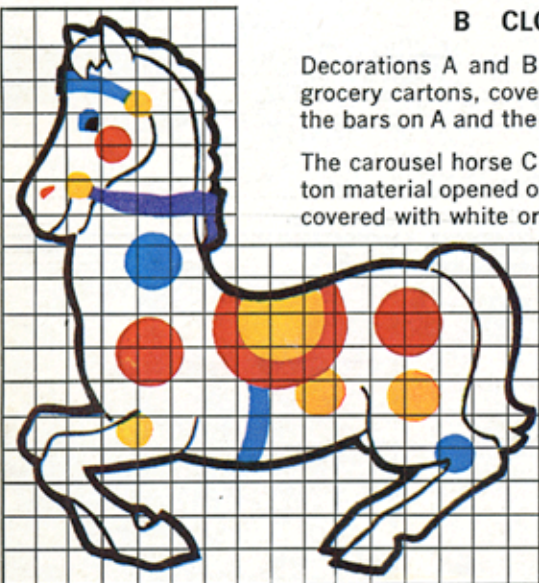


**B CLOWN FACE GAME**

Decorations A and B are both made from standard grocery cartons, covered with colored paper. Cut out the bars on A and the clown's mouth on B.

The carousel horse C is also made of cardboard carton material opened out, glued or taped together, and covered with white or colored paper. From saddle to floor should be the same height as a kitchen chair seat approx. 18".

All polka dots and semi-circle patterns can be traced from plates and saucers of desired size.



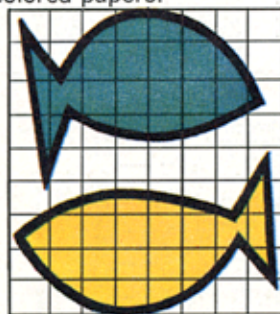
**C CAROUSEL HORSE**



**D BEACHBOY SURFBOARD**

The beachboy surfboard D is again made from opened out carton covered with colored paper and can be any size desired.

The tropical fish are simply cut from various colored papers.

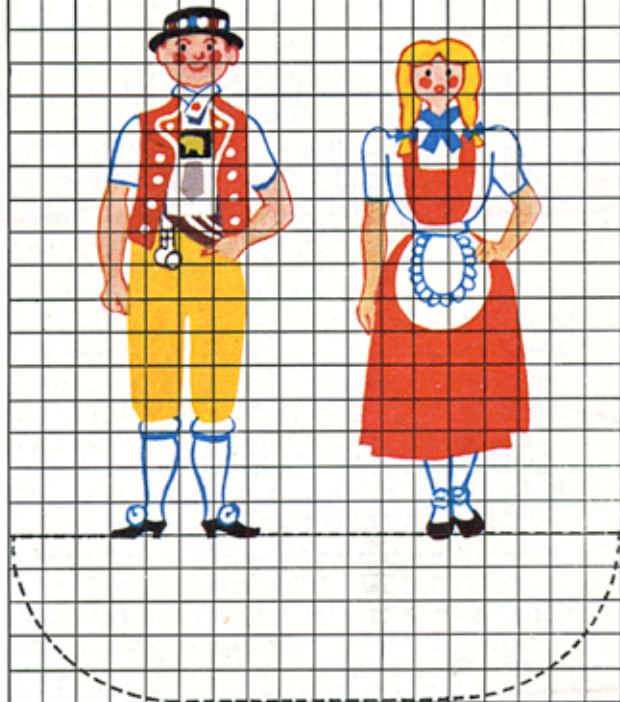


**E TROPICAL FISH**

### CONSTRUCTION INFORMATION

The grid pattern on A B C D E and F enables you to enlarge any of these items to a convenient size for your party. Just transfer the same number of squares to your larger cardboard, and follow the design in the squares. Bird of Paradise G: Cut pineapple in half, lengthwise, scoop out pulp and trace out bird's head from hard core, make V wedge and stand head in it, fasten with toothpicks. Dice up remaining pineapple and fill in shell — peel and remove membrane of orange and grapefruit — place sections alternately along back as pictured, place hors-d'oeuvre picks on crown and green and red cherries along edge of pineapple to tail — garnish with watercress or grapes.

Materials needed for these decorations are: Cardboard grocery cartons, colored paper, poster paint, plastic tape and paste. All inexpensive and obtainable in grocery, drug or variety stores.



**F TRADITIONAL SWEDISH BOY AND GIRL**

The Swedish boy and girl are made of stiff white paper approx. 12" tall. Paint in design and cut out figures. To stand them up fold back on dotted line.



**G BIRD OF PARADISE CENTERPIECE**

**H PALM TREE**

